

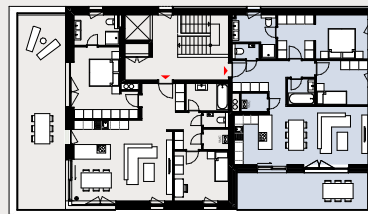


## APPARTEMENT N° B-2-16

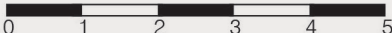
**APPARTEMENT:** 2 CH  
**ÉTAGE:** étage +2  
**SURFACE:** ± 87,0 m<sup>2</sup>

### Séjour / Cuisine /

<b>Hall:</b>	± 47,5 m <sup>2</sup>
<b>Chambre 1:</b>	± 10,0 m <sup>2</sup>
<b>Dressing:</b>	± 7,0 m <sup>2</sup>
<b>SDD:</b>	± 6,0 m <sup>2</sup>
<b>Chambre 2:</b>	± 10,0 m <sup>2</sup>
<b>SDB:</b>	± 3,0 m <sup>2</sup>
<b>WC:</b>	± 1,5 m <sup>2</sup>
<b>Débarras:</b>	± 2,0 m <sup>2</sup>
<b>Terrasse:</b>	± 21,0 m <sup>2</sup>



échelle 1:100



by marc gubbini  
architectes  
L-2557 LUXEMBOURG  
14 rue Robert Stumper  
tel: 26 29 53-1 fax: 26 29 53-53  
archi@gubbini.lu  
www.gubbini.lu